



Garage Cabinets AND GARAGE STORAGE SOLUTIONS

- Custom built for the garage environment
- Beautiful powder-coated color choices
- More than 500 cabinet choices
- Virtually unlimited configurations
- Lifetime Warranty



Organize. Store. Simplify. AND LOOK



Why Garagegear?

RedLine Garagegear offers everything you need to create your perfect garage.

- More than 500 cabinet styles and sizes to fit almost any space, any need
- 12 beautiful powder-coated colors to match any taste and décor
- Seamless powder-coated finish is virtually impervious to temperature and humidity extremes
- Cabinets designed and built for the garage environment
- Custom designed and custom built - no off-the-shelf cabinets
- Built to last, backed up with an industry-leading Lifetime Warranty
- Cabinets made in the USA to ensure quality and consistency
- Expert installation by your dealer

What do you want in your garage?

Room for another car? Places to neatly store things out of sight and within easy reach, but easy to find? A workplace for car care, wood-working or gardening? Or just a clutter-free garage that you're not ashamed for your neighbors to see?

From cabinets that organize and neatly store your stuff, to storage walls that let you clear things off your floor and keep it in easy reach... **garagegear** can help.

With more than 500 cabinet choices in styles and sizes to fit **any** space, you can have the garage you have always wanted! A usable workbench. Tools and equipment in their places. A floor free of toys and gardening equipment. Last but not least, room for your car.



THE PROBLEM... Clutter is everywhere. Tools and equipment get misplaced. Toys and gardening tools cover the floor. Cleaning is almost impossible.



THE SOLUTION... Get everything off the floor! **Garagegear** storage solutions are wall-hung, freeing limited floor space for other things... like your car.

GREAT!

Garagegear makes it easy to have your dream garage

Whether you need a lot of storage (like the panoramic photo to the left) or something else, we can help. Whether your garage is large or small, **garagegear** has the solutions for your garage and your needs. You decide what you need, and we will do the rest.

Easy to install

RedLine **garagegear** is sold and installed by factory trained and certified agents. They will design a custom solution for you, order the materials and install your new storage system. You can be sure everything will work right... the first time. Nothing for you to do, but put everything in its place, and enjoy your regained space.

Easy to organize

These cabinets are designed to help you organize and keep organized. A wide variety of drawers, cabinets and tall storage cabinets with customizable interiors make

it easy to have the type of storage space you need to fit things. And speciality cabinets for tools and small parts keep everything in its place, easy to find and put away.

Easy to use

You will find these cabinets are a pleasure to use. Smooth gliding full-extension drawers and wide opening cabinets allow you to easily put things away, and find them again. The tough finish and worksurfaces are designed to stand up to day-to-day use, and keep working for years.

Easy to maintain

A simple damp cloth will wipe away most common dirt. Stubborn grime, such as grease or oil, can be cleaned with most household cleaners. The tough powder-coated finish and work surfaces can withstand most cleaners or solvents. Finally, the off-the-floor design makes it easy to clean beneath and around your cabinets.

Organize every inch of your garage

Unfortunately, not everything can fit in our beautiful garagegear cabinets, which is why we offer solutions to store items on the walls, or even from the ceiling!

Wall storage

Handiwall slatwall is a great way to regain space on your floors. Store everything from garden equipment to bikes on the wall, keeping them off the floor, but in easy reach.



With a variety of colors and dozens of hooks, baskets and shelves, slatwall is great as stand alone storage or a complement to garagegear cabinets.

Ceiling storage

Large bulky items are always a storage problem. Our overhead storage racks are a great solution for large containers, large sports gear, or out-of-season items.



Available in two sizes with adjustable heights, overhead storage racks can support as much as 600 pounds.



Slatwall is the perfect companion to garagegear cabinets. Hand tools and small containers can hang above the worksurface, keeping everything in easy reach.

**MADE IN THE
USA**
**We proudly support
our troops around
the world.**

The garagegear solution

RedLine **garagegear** cabinets and storage solutions offer the finest garage and workshop organizer systems available. From their wall-hung design to their attractive and extremely durable finish, these storage cabinets set the standard. Unlike big-box store solutions, RedLine **garagegear** is built to last. In fact, our RedLine Storage Cabinets are guaranteed for a lifetime*.

RedLine cabinets are designed to give you years of trouble-free service. We build quality and dependability in before you put anything in them.

Custom designed and built

Garagegear cabinets are designed and built specifically for you, your space, and your needs. Upon receipt of your order, we manufacture your cabinets to your exact specifications. No off-the-shelf pre-built solutions, and everything is American made.

Whether you need a work surface for a workshop, gardening, hobbies, or just cabinets for storage, we have you covered. And, with our rolling workbench, you can bring the work surface to your work.

If your space is limited, we have cabinets that fit in as little as 12" of space and require only 7" of clearance to open.

** See Warranty details on the inside back cover of this catalog.*



What separates **garagegear** from its competitors? Here are some of the major reasons **garagegear** is different (and better).

Tough skinned

They say beauty is only skin deep, but the skin on these cabinets is as tough as it is beautiful. The powder-coated finish seals all exterior surfaces – no seams or cracks – and creates a hard durable surface that will withstand cold, heat, humidity, oil, grease, dirt and grime, all found in the garage. The finishes are as attractive as they are durable, with many exciting decorator colors from which to choose.



Off-the-floor design

RedLine cabinets hang on the walls eliminating two of the biggest problems with freestanding units; moisture on the floor, and uneven floors. Unlike other systems, our hang rails are 2" wide for greater strength and stability, while at the same time creating a natural pathway for wiring.



Quality throughout

All drawers are constructed from 9-ply birch plywood, and feature time-tested dovetail construction for long-life durability. Full-extension soft-close drawer slides are rated at 100 pound capacity, and high quality hardware for maintenance-free life.



Engineered for everyday use

First and foremost, **garagegear** has been designed for the user. Wide-opening cabinets and full-extension drawers make access easy. Durable powder coated finishes and tough work surfaces need little or no maintenance. Quality materials and hardware throughout ensure a long trouble-free life. These are cabinets you can count on today and for many years to come.

Built for durability

We built our cabinets to withstand the extremes of temperature and humidity found in the typical garage and still function efficiently. Cabinet exteriors are powder coated for an attractive, durable finish that outperforms paint or laminate finishes. Work surfaces will stand up to heavy every day use and still look great. Drawer boxes feature superior Baltic birch, dovetail construction and full-extension drawer glides with precision ball bearings for extended use. And heavy duty hardware throughout will last the lifetime of the cabinets.

Personalized storage and workspaces

Whatever your needs and lifestyle—gardening, woodworking, auto shop, sports, or just plain storage—we will custom design a solution just for you. These are cabinets you'll enjoy using every day for a lifetime!

Industry-leading flexibility

Other companies may give you several cabinet choices in a single depth... we give you more than 500, and multiple depths. With a choice of colors, styles and sizes we can create a solution to fit virtually any space and need.

Professional installation

Garagegear is installed by certified professionals. You choose the solution, we do the work.

Industry-leading warranties

All our cabinets carry a Lifetime Warranty*, ensuring years of dependable service. You won't find warranties like these on any competitive products.

* See Warranty details - inside back cover



Easy-to-use features

RedLine cabinets were designed from the start to be functional and user-friendly. Wide opening doors and full-extension drawers ensure easy access. Shelves can be adjusted to suit individual needs. All surfaces can be easily cleaned. These cabinets will be a pleasure to use for years to come.

Durable work surfaces

We have three great choices for work surfaces... Black urethane **Impact Coating** offers ultimate durability for heavy use, water-tight and chemical-resistant. Beautiful **maple butcher block**, great for hobbies, gardening, household repairs or other everyday use. **Commercial-grade laminate** in choice of colors.

Garagegear Cabinets and Accessories

Garagegear cabinets were designed and built for the typical garage environment:

- Powder-coated exterior surfaces, with multiple color choices
- More than 500 cabinet choices
- 9-ply birch plywood drawers – won't warp or disintegrate
- Drawers feature dovetail construction for strength
- Full-extension drawer slides with 100 lb. static and dynamic rating
- 6-way adjustable door hinges
- Anodized aluminum or brushed nickel handles – resist rust and corrosion
- Powder-coated steel hang rail
- Cabinet depths of 12", 16" or 24"
- Single and bi-fold doors available for tight spaces and limited clearance
- Lifetime Warranty - details on page 11

Cabinet Finishes

Garagegear cabinets feature powder-coated finishes in more color choices than other manufacturers. Powder-coated MDF outperforms plastic, paint or laminate, and resists chipping, denting, peeling or warping.

All exterior doors and panels are MDF. Each piece is sprayed with a powdered mixture and heated, causing the powder to gel and flow, bonding to the MDF and completely sealing the piece. The resulting finish is attractive and durable. The process is environmentally friendly... no heavy metals, solvents or VOCs.



Upper Cabinets
Double and single door units – with adjustable shelf, in two heights.

Note: Cabinets are wall hung on a steel rail and use the wall as the cabinet back.



Lower Cabinet
Single and double door designs, with or without drawer.



Trash Pullout
Full extension drawer holds 13 qt. trash can.



Storage Cabinet
Adjustable shelves with optional pullout shelf. 5 shelves standard.



Bi-fold Doors
Bi-fold doors require only 7" to open. Great for limited space.



Lockers
Great storage spaces for individual family members.

Powder-coated Finishes



Platinum
Stippled matte finish



New Burgundy
Hammertone finish



Sandstone
Hammertone finish



Earthstone
Hammertone finish



Mid-life Crisis Orange
Hammertone



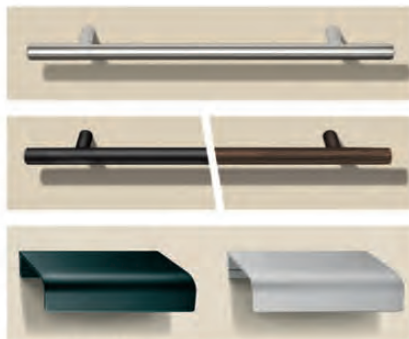
Pewter
Hammertone finish



Storage Bin Pullout
Dual sided with 40 removable plastic bins.



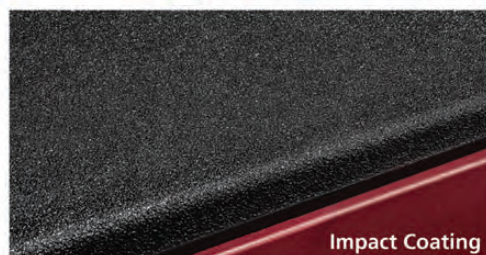
Drawer Cabinet
Full extension drawers with 50 lb. capacity each. 3 to 7 drawer units.



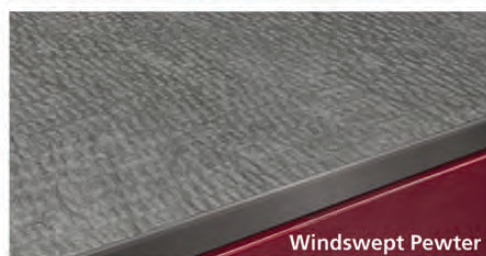
Door Handles
8" bar style brushed nickel, matte black or bronze, or aluminum in black or satin nickel.



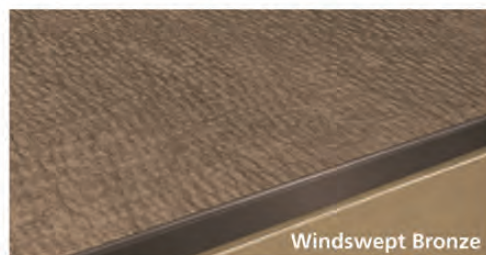
Maple butcher block



Impact Coating



Windswept Pewter



Windswept Bronze



Corner Cabinet
Wrap your cabinets around the corner. Tall, upper and lower cabinets.



Garage Closets
Several widths available in depths up to 36". Great for storing tall or large items. Shown with optional slatwall.

Work Surfaces
Maple butcher block, industrial-strength black Impact Coating, or laminate in Windswept Pewter or Bronze.



Royal Blue
Hammertone finish



Hammertone Red
Hammertone finish



Frosty White
Smooth matte finish



Black
Hammertone finish



Fog Gray
Smooth matte finish



Folkstone
Smooth matte finish

Actual colors may vary from those shown here. Colors are subject to change. See your Agent for current samples.

Custom Workbenches

Custom Workbenches share all the same features as our garagegear cabinets, but are freestanding, so they can be located anywhere, even the middle of your garage if you choose. Workbenches are mounted on adjustable legs or on casters. All workbenches feature finished powder-coated back panels so they look great on all sides.

Workbenches are a great complement to our wall-hung cabinets. They use the same lower cabinet drawer units, door units, bins and tops as our regular cabinets (see the Cabinet Choices page to the right). Mix and match these components to create the Workbench that's perfect for you.



Stationary Workbench

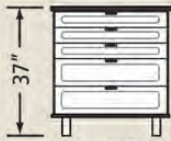
A free-standing unit with adjustable legs, available in 16", 32", 48", 64" or 80" widths, with a 24" deep work surface. In addition, the 80" unit can contain a knee space for sitting. Larger units feature additional legs for stability.



Rolling Workbench

Move your work surface, tools and equipment to your projects, with our rolling workbench. Large 6" rubber casters roll easily and quietly wherever you want and lock for stationary use. In 16", 32", 48", 64" or 80" widths.

STATIONARY WORKBENCH



16" or 32" Workbench
Drawer or door units
24" depth



48" or 64" Workbench
Mix drawer and door units
24" depth



80" Workbench
Mix drawer and door units
24" depth



80" Workbench
Drawer and door units with knee hole
24" depth

ROLLING WORKBENCH



16" or 32" Rolling
Drawer or door units
24" depth



48" or 64" Rolling Workbench
Mix drawer and door units
24" depth



80" Rolling Workbench
Mix drawer and door units
24" depth



Garage Closets

XTREME DEPTH CABINETS



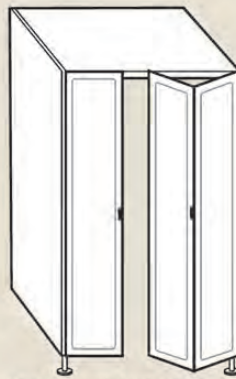
Feature 36" deep cabinets

Perfect for storing (and hiding) large items

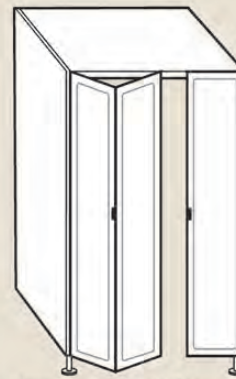
- garbage cans
- bicycles
- large power equipment



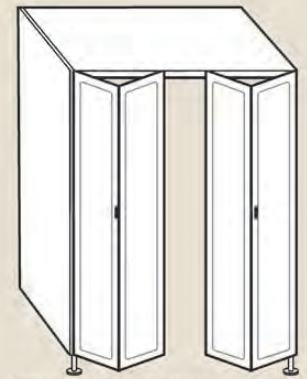
Xtreme Double Door
32" wide open cabinet
Double doors



Xtreme Depth Triple Door
48" wide open cabinet
Single left door and bi-fold door



Xtreme Depth Triple Door
48" wide open cabinet
Bi-fold door & single right door



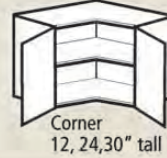
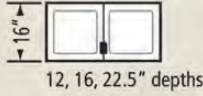
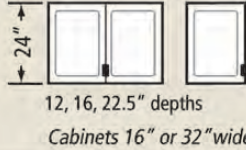
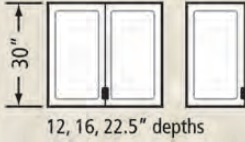
Xtreme Depth Four Door
64" wide open cabinet
Double bi-fold doors

Garage Cabinet Choices



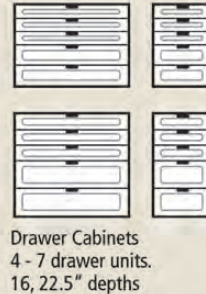
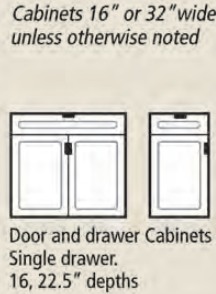
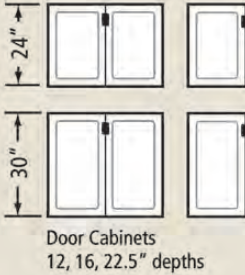
Garagegear offers more cabinet styles and sizes than any other garage cabinet manufacturer. With more than 500 cabinet variations and multiple colors from which to choose, you can find a perfect fit for your space.

UPPERS



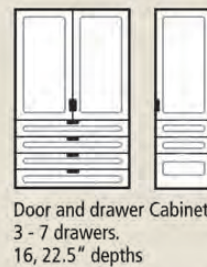
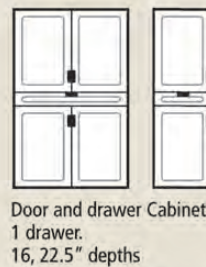
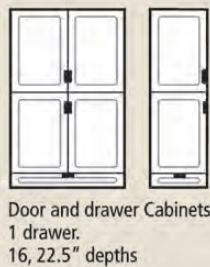
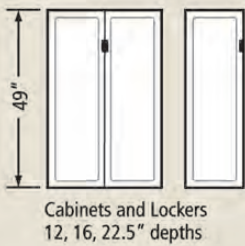
OVER 25 CHOICES

LOWER CABINETS



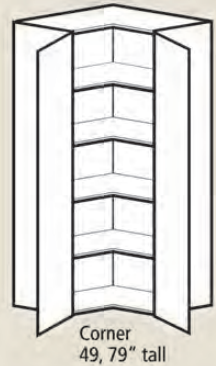
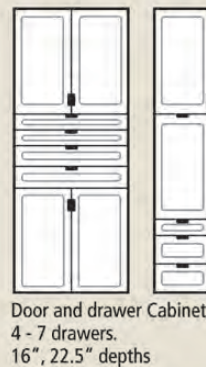
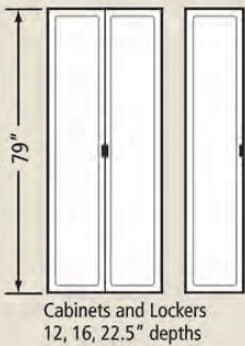
OVER 75 CHOICES

TALL STORAGE CABINETS



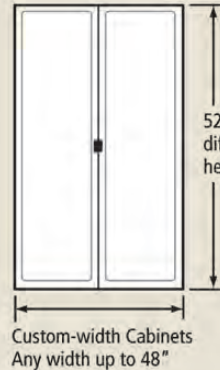
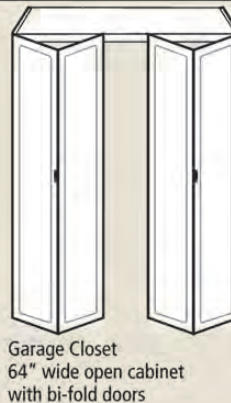
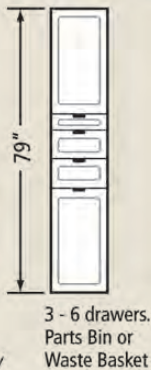
Cabinets 16" or 32" wide unless otherwise noted

OVER 350 CHOICES



SPECIALITY CABINETS

OVER 25 CHOICES



Cabinets are 16" or 32" wide unless otherwise noted

Additional Storage Options

HandiWALL®

HandiWALL® slatwall is the perfect companion for **garagegear** cabinets. Get everything from bikes to toys to garden equipment off your floor and keep them visible and in easy reach.

HandiWALL features heavy-duty interlocking panels of industrial-grade thermoplastic that are waterproof and mold and mildew resistant. Available in eight colors, HandiWALL blends beautifully with **garagegear** cabinets.

A large variety of accessories from hooks to shelves to bins are available. Just snap them into place and you're finished. And rearranging things couldn't be much easier. Simply move your hooks and bins to different locations on your HandiWALL, and you're done.



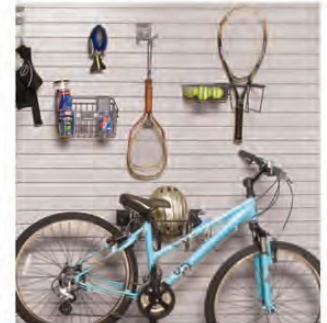
Selected hooks and accessories include a 'slide-to-lock' feature to keep everything securely in place.



Available in nine colors to blend with **garagegear** cabinets



46 piece Accessory Kit. Additional kit sizes available



Specialty kits for sports or tools also available

Overhead Storage Racks

Still need more storage space? Use the space over your head. Our ceiling storage racks are an economical way to add overhead storage. Ideal for bulky items, boxes or storage containers and out-of-season items.

Constructed of steel with a durable white finish, overhead racks feature adjustable heights to fit your space. Units are available in 2' x 8' or 4' x 8' sizes. Multiple units can be used together to increase storage space as needed.



4' x 8' ceiling storage rack



Great for keeping hand tools in easy reach



Perfect for gardening tools and supplies. Lots of hooks, bins and shelves to choose from, as well as specialty holders



Keep sports equipment and toys off the floor



Horizontal rack for bikes and equipment



Recycling center with lid



Keep sports equipment and toys off the floor



Hose holder with storage compartment



Heavy duty hooks for large or heavy items

Getting Started

Our process has been designed to minimize your effort while keeping you in control. It all starts by contacting your local Authorized Agent.

Contact your local Agent

If you have a printed copy of this brochure, chances are you know your local Agent. If you visit our website at www.redlinegaragegear.com Click on the "FIND A LOCAL AGENT" button on the top of the Home page. Enter your ZIP code and you'll be forwarded to your local Agent's web page, where you'll find contact information. Simply call or email to set up a consultation.

Consultation

Once you contact your Agent, he, or she, will set up an appointment at your home to discuss your needs and budget, and to get specific information on the space you need organized. This initial consultation takes an hour or so, depending on the size of your project, and your goals.

Design and Proposal

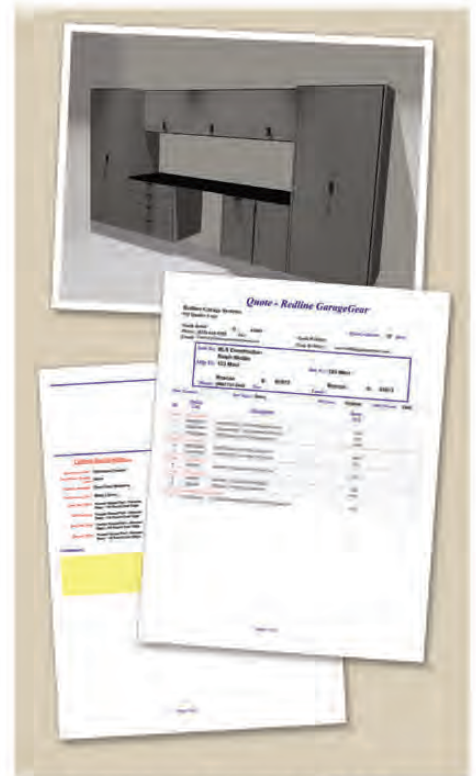
Based on your requests, your Agent will create a design specifically for yours. All designs are custom, since no two garages or needs are the same. In a couple of days you'll receive a detailed written quote and a 3-D drawing of the proposed design. Once you've settled on a design, our work begins.

Manufacturing

Your Agent will send your designs and specifications directly to our factory, where your garage cabinets will be custom manufactured. Our facilities and equipment are state-of-the-art, ensuring your finished cabinets meet our exacting quality standards (and yours). In a week or so, your product will ship directly to your home for your Agent to complete installation of your new cabinets.

Installation

Final installation usually takes only a day or two, depending on the size of your project. The rest will be up to you to fill your new cabinets and enjoy your new organized space.



Your proposal will include a color 3-D drawing of your design and a detailed quote.

About RedLine Agents



RedLine **garagegear** is sold and installed only by Authorized Agents, factory trained and certified in proper handling and installation of all **garagegear** products. You can be sure everything will work properly and stay that way.

Agents are assigned regional territories, so you will always be dealing with the same people. Your Agent will want you to be satisfied, and so do we!

Garagegear Warranty

RedLine Garagegear Cabinets with a powder-coated finish are guaranteed to function normally for a lifetime when installed by an Authorized RedLine Agent. Covered items include cabinet doors, cabinet boxes, work surfaces, pulls, hinges, castors and glides.



To qualify, cabinets must be the original, unmodified installation and in the possession of the original owner.

Minor scratches, dents, nicks, and scuffs are normal wear and are not covered. Deliberate or excessive abuse is not covered.

See your Authorized Agent for complete warranty details.



www.redlinegaragegear.com

Corporate Office: 877 / 624-2332

Authorized Agent